

EnableNSW Update

AustPAR
28 April 2017

Anna Hartley
Equipment Advisor



HealthShare
EnableNSW

What's new

Prosthetic Limb Service (PLS)

- Roll on Liners end of pilot
- Components Tender released
- Accreditation Review
- Factsheet improvements for AANSW

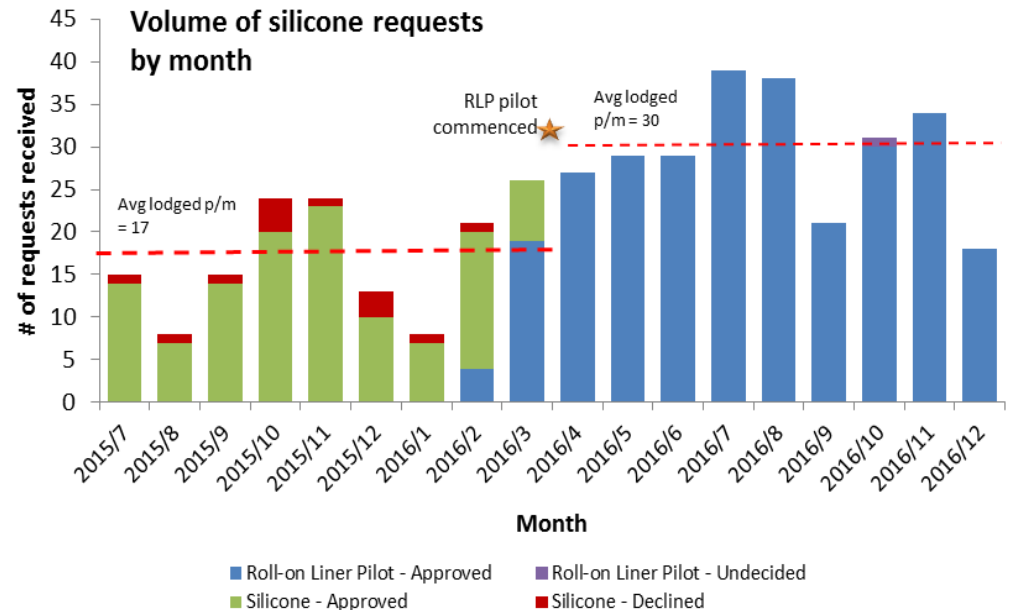
EnableNSW

- Education modules
- Contract implementations
- NDIS transition

Roll on Liners

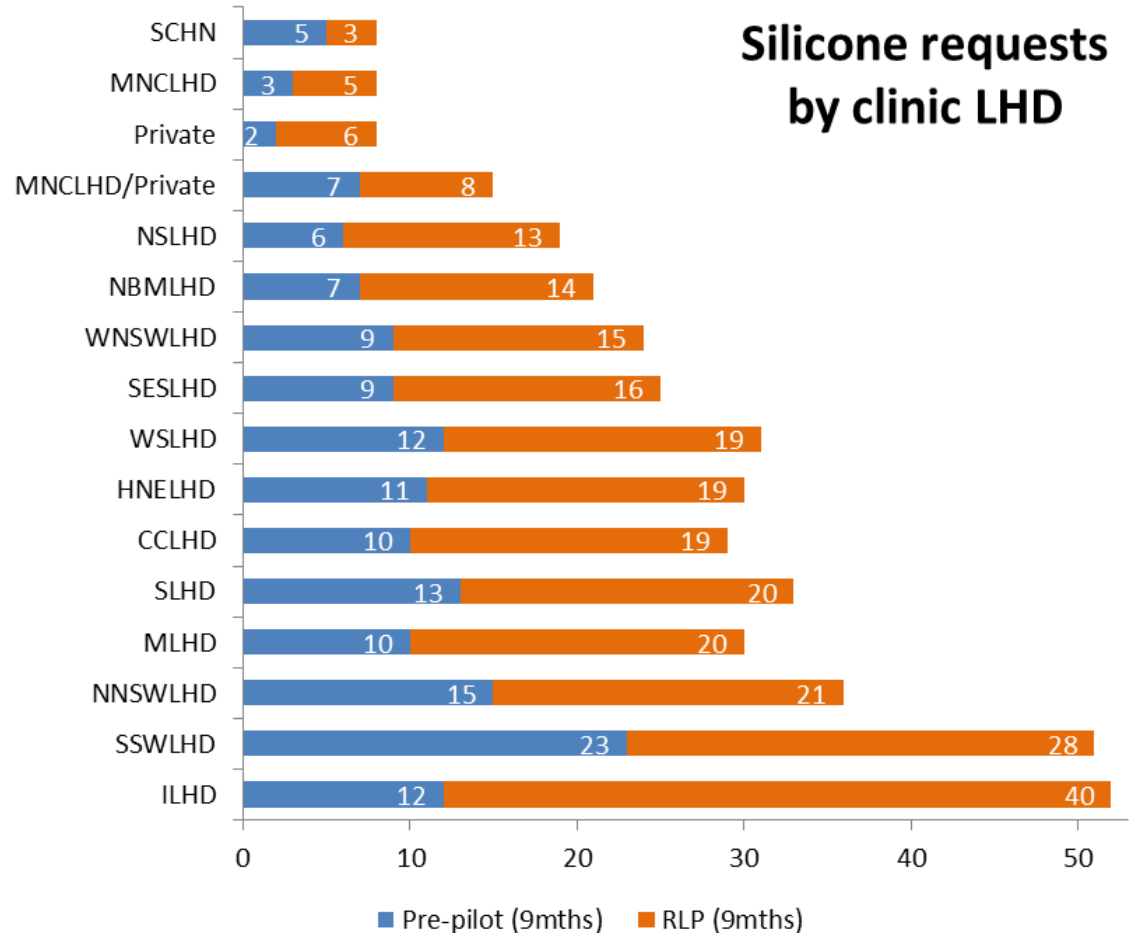
- Pilot

- New clinical criteria and request forms
- 28 March 2016 to December 2016
- 73% increase in monthly requests for roll-on liner systems
- 99.6% approved
- Only 9% of requests required further clinical information



Roll on Liners

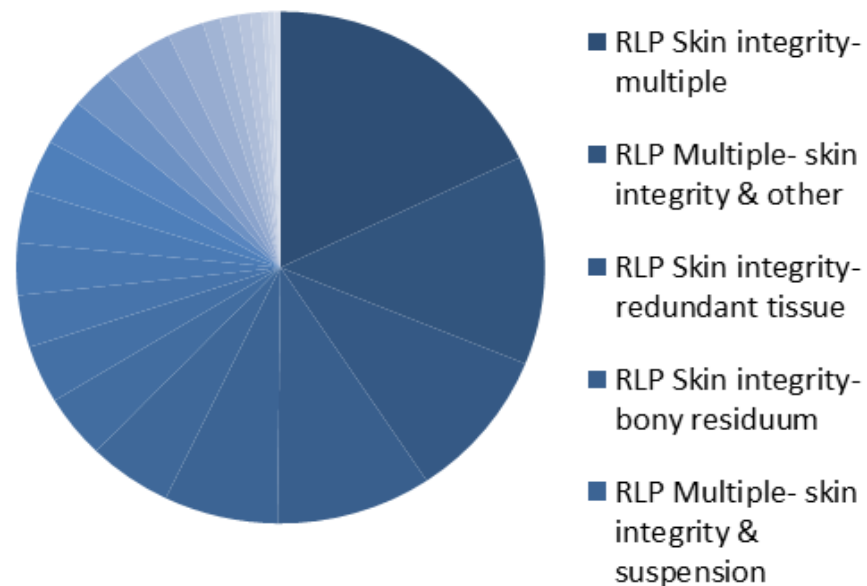
Most LHDs increased their prescription rates- some more than others



Roll on Liners

Skin integrity was the most common prescription variable

Reason for RLP request



Roll on Liners- new process

- No discretionary form
- However, prescription should meet the clinical criteria specified in the PLS Funding Guidelines
- Funding amounts unchanged
- Maximum one (1) liner per year
- EnableNSW may audit requests as required from time to time
- Scripts for roll-on liners on interim prostheses accepted

Components Tender

- A Request for Tender (RFT) was released on 7 April 2017 for the provision of prosthetic components
- This is a way of formalising our current component list and minimising the changes that occur throughout the year
- If you have a particular component or consumable that you really want to remain on the PLS list, or a new component that you are very keen on, then speak to the distributors and encourage them to submit a tender response
- Tender responses close 15 May 2017

Accreditation

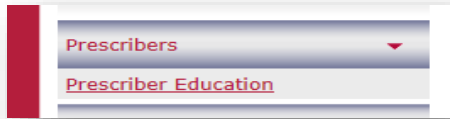
- A Technical Working Group (TWG) is currently reviewing the PLS Accreditation Guidelines for clinics, prescribers, PSPs and prosthetists
- A draft for comment will be released in May
- Please provide your feedback

- The TWG suggested that amputee clinic physios should be suitably experienced in amputee care
 - *Do you think that recommending AustPAR membership/participation would be reasonable?*

Factsheets

- We are working with the Amputee Association of NSW to package our factsheets into an easy format for printing/collating
- This will allow their volunteers to produce a single factsheet document, rather than having to collate multiple sheets each time
- If you have any suggestions for updating our current factsheets, please let us know.

EnableNSW



- Prescriber Education and Training modules added to website
- see Prescriber tab



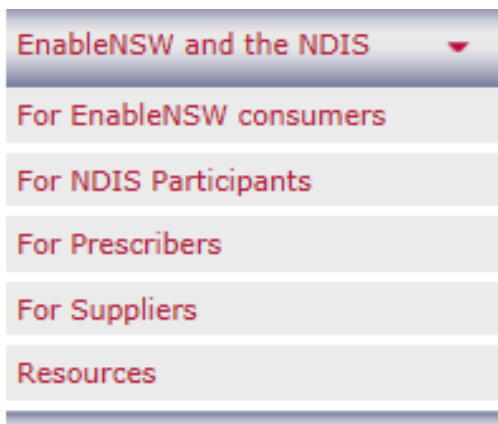
- Updates/new information re NSW Government Contracts
 - see Contracts tab
 - **963 Allied Health** (Compression Garments and Walking Frames)
 - **217A Beds and Mattresses** - revisions
 - **217B Clinical Furniture** – in progress

NDIS transition

- From 1 July 2017, eligible people in all remaining areas of NSW will begin to transition to NDIS
- Check this banner on our homepage to read general information about NDIS

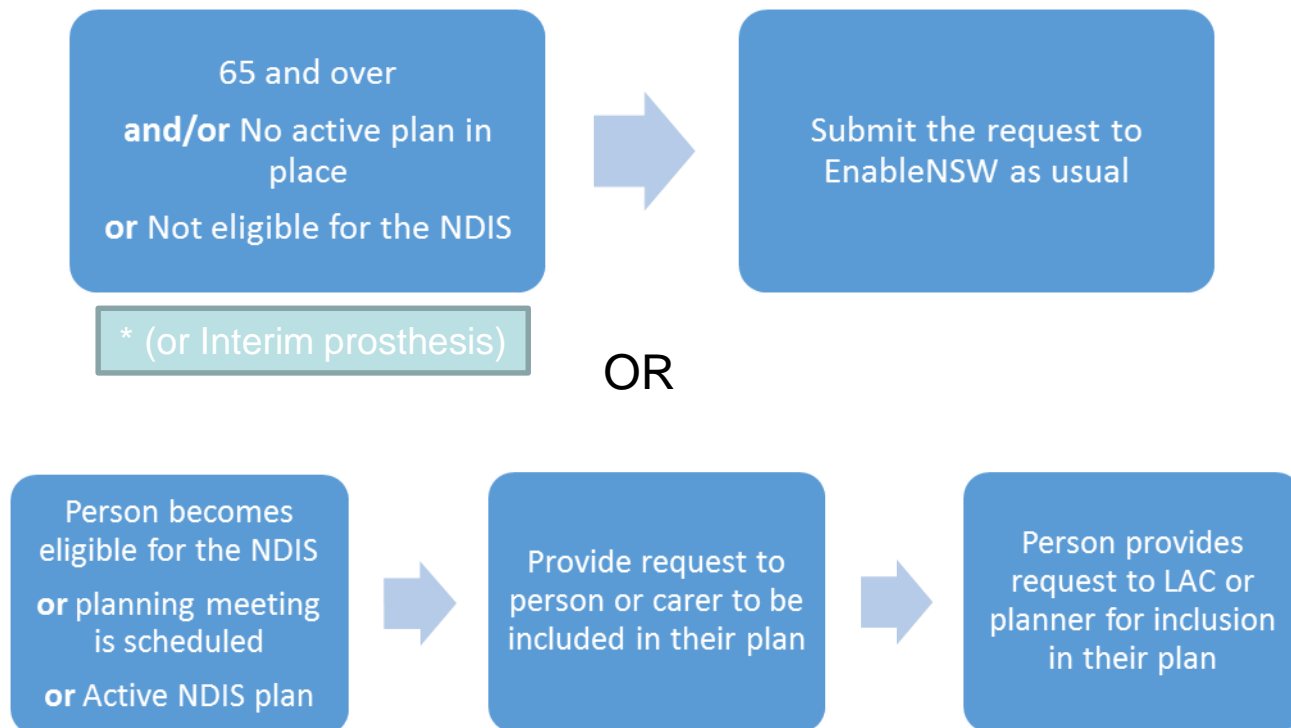
EnableNSW and the National Disability Insurance Scheme

- Use these links to find more detailed information



NDIS transition

When should you send a request to EnableNSW vs NDIS?



EnableNSW

MYTHBUSTERS

- EnableNSW will cease to exist after 1 July 2017



- This is a Myth. EnableNSW will still provide services for people aged 65 and over; people not eligible for NDIS; interim prosthetic limbs; and people requiring respiratory support

- EnableNSW will have lots of extra money in the budget because half their consumers have left



- This is a Myth. EnableNSW will retain that portion of the budget for people not eligible for the NDIS

EnableNSW

MYTHBUSTERS

- EnableNSW has changed their policy and guidelines to reflect NDIS guidelines
 - This is a Myth. No, our policy has not changed. Our eligibility criteria has not changed. Our funding guidelines have not changed.



The Future

- Components contract will be implemented later this year
- AEP Footwear/Orthoses guidelines due for review late 2017
- NDIS
 - Second year roll-in of LHDs begins 1 July 2017
 - Active role in promoting transition for eligible people
- IPTAAS
 - Actively promoting the P&O initiative

Contact us:



www.enable.health.nsw.gov.au



enable@health.nsw.gov.au



1800 362 253