

NDIS & EnableNSW transition

AustPar
23 Sept 2016

Bilateral Agreement

- Agreed approach to transition to full scheme NDIS in NSW
- Participant Phasing will prioritise **existing** NSW specialist disability clients
- **Existing** – people receiving services funded or directly provided by FACS
- **New** – people receiving supports through other NSW Government agencies/ Commonwealth / newly diagnosed

NDIS Phasing Arrangements

Estimated Annual Intake of Participants

Client Cohort	Trial	2016-17	2017-18	2018-19	Total
Existing NSW Clients	6,583	36,655	35,570	0	78,808
New and Other Participants	5,528	6,567	24,650	26,404	63,149
Total Intake	12,111	43,222	60,220	26,404	141,957
Total Cumulative Intake	12,111	55,333	115,553	141,957	

NDIS Phasing Arrangements

- The NDIS will be made available progressively across NSW over the next three years.
- The first groups transitioning from the current NSW government supports to the NDIS will be those people living in large residential centres, group homes, hostels and receiving in-home support.
- Existing Family and Community Services (FACS) clients who receive specialist disability supports will automatically be eligible for the NDIS, once it is available in their area.
- By July 2019, it is estimated that 141,957 people are expected to transition to the NDIS in NSW.

Phasing by Group

Sequence	Service Group	Examples of Service
1	Large Residential Centres	Residents
2	Group Home	Residents (includes small residential)
3	Community High	Hostels, attendant care, in-home support, alternative family placement
4	Community Access	Learning and life skills, recreation and holiday programs, community access
5	Community Support	Therapy, early intervention, behavioural intervention, case management
6	Respite	Centre based and flexible
7	Community Care	Domestic assistance, personal care, meals service, home modifications, transport, case management (excludes assessment)

NDIS Phasing Arrangements

- People under 65 years who access the AEP **and** receive specialist disability supports from the NSW Department of Family and Community Services (FACS) will be transitioned to the NDIS during 2016, 2017 and 2018 in line with the phasing arrangements
- PLS users are less likely to be matched to FACS clients to transition in early phasing

In-scope review

- NDIS Funding (full scheme):
 - NSW Government \$3.1B pa
 - Australian Government \$3.2B pa
- Three year process led by NSW Treasury and Department of Premier and Cabinet to determine which disability-related services/program can be offered as part of the NSW contribution to the NDIS.

In-Scope Services

In-scope services refer to existing NSW Government funded/delivered disability support services that are aligned (fully or partially) to the NDIS eligibility criteria.

This includes Family and Community Services (FACS) disability specific services (which will be **cashed** out) as well as the broader range of disability-related services provided through NSW Government agencies such as Health.

EnableNSW Programs in-scope for NDIS

- Aids and Equipment Program
- Prosthetic Limb Service
- Home Ventilation Programs
 - Children's HVP
 - Adult HVP

In-kind Services

In-Kind services are a subset of the disability services assessed as in-scope.

These include NSW Health funded /delivered services that the NSW Government will decide whether to continue funding and administering.

They will form part of the NSW Government's non-cash contribution to the NDIS.

The NSW Government has the option to decide whether it will cash out any in-kind service at any stage.

EnableNSW in-kind services

AEP

People under 65 years with a disability (excludes those under 65 with a chronic health condition).

PLS

All prosthetic limb services for people under 65 years (excludes interim limbs).

HVP

Attendant care services for people under 65 years assessed as eligible for NDIS (excludes respiratory component).

EnableNSW role in transition

2013– 2016

Hunter Trial in 3 LGAs:
Newcastle, Lake Macquarie &
Maitland - MOU

July 2015 – June 2016:

NBMLHD children under
18 years – Letter of
Agreement

1 July 2016 – 30 June 2018

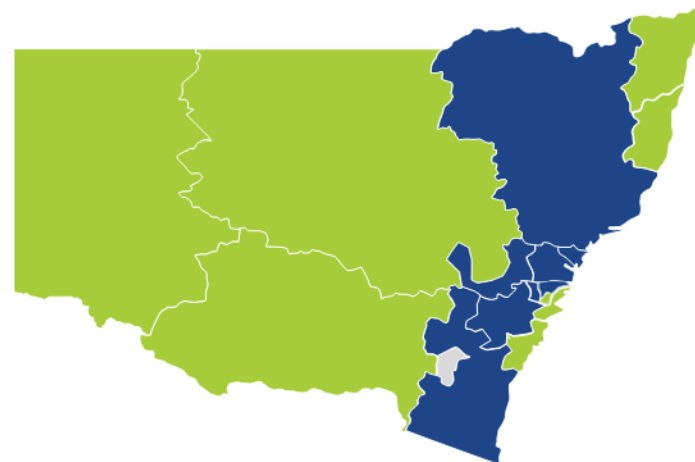
Transition to full scheme
across NSW – LHD Phasing
(Working Arrangement in
progress)

NDIS Roll Out

From 1 July 2016

People will be able to access the NDIS if they live in:

- ✓ Central Coast
- ✓ Hunter New England
- ✓ Nepean Blue Mountains
- ✓ Northern Sydney
- ✓ South Western Sydney
- ✓ Southern NSW
- ✓ Western Sydney



From 1 July 2017

People will be able to access the NDIS if they live in:

- ✓ Illawarra Shoalhaven
- ✓ Mid North Coast
- ✓ Murrumbidgee
- ✓ Northern NSW
- ✓ South Eastern Sydney
- ✓ Sydney
- ✓ Western NSW
- ✓ Far West

■ From 1 July 2016

■ From 1 July 2017

EnableNSW phasing – Year 1

- EnableNSW consumers linked to FACS clients to transition in Year 1 – 7,557 (33%)
- EnableNSW linked to FACS clients who have transitioned – 1,780
- EnableNSW consumers <65 years not linked to FACS clients – 15,193

Transition Funding

- If a consumer is under 65 years of age and currently receives Orthotic/FW services through EnableNSW, they ***may*** be eligible for the NDIS.
- If a consumer is under 65 years of age and currently receives Prosthetic Limb services through EnableNSW, they ***will*** be eligible for the NDIS.
- If an EnableNSW consumer is eligible and becomes an NDIS Participant, their funding supports will be provided by NDIS, ***when they have a plan in place.***

Reasonable and Necessary

What is it?

- be related to the participant's disability
- not include day-to-day living costs that are not related to a participant's disability support needs
- represent value for money
- be likely to be effective and beneficial to the participant, and
- take into account informal supports given to participants by families, carers, networks, and the community.

How will EnableNSW assist transition?

- Once a person is deemed eligible for the NDIS, EnableNSW can provide them with a list of equipment and services they access through EnableNSW to take to their NDIS planning meeting.
- If your client is currently using EnableNSW, or has used our services in the past, please continue to send ERFs to us until they are confirmed as an NDIS Participant **and** have an NDIS Plan in place. Applications are processed within existing guidelines and waiting times.
- EnableNSW and the NDIA will be working together to ensure funding is covered for any equipment requests in progress.
- EnableNSW is a registered provider and clients can still utilise EnableNSW for supply and coordination of supports after they have transitioned.

Information is available on the EnableNSW website at www.enable.health.nsw.gov.au

The screenshot shows the EnableNSW website homepage. At the top left is the NSW Government logo and the HealthShare EnableNSW logo. On the top right, there are links for 'Ask government', 'Skip to content', and 'Sitemap', along with icons for email, a person, and font size adjustment. A search bar is located below these icons. A horizontal navigation menu contains links for 'Home', 'Aids and Equipment Program', 'Home Respiratory Program', 'IPTAAS - Travel Assistance', 'Prosthetic Limb Service', and 'Contact Us'. A left-hand sidebar lists various services and programs, including 'About EnableNSW', 'Services', 'Applying to EnableNSW', 'Forms and Guidelines', 'Prescribers', 'EnableNSW and the NDIS', 'Contracts', 'Suppliers', 'Equipment Allocation Program (EAP)', 'Statewide Paediatric Equipment (Bathing and Mobility)', 'IPTAAS - Travel Assistance', and 'Away From Home Haemodialysis (AFHH) Program'. The main content area features a blue banner for 'EnableNSW and the National Disability Insurance Scheme'. Below this is a large image of an elderly woman in a wheelchair sitting on a porch. To the right of the image are three red buttons: 'APPLY ONLINE For aids and equipment or travel assistance', 'Prescriber Dashboard', and 'Consumer Dashboard'. Below the image is a welcome message: 'Welcome to EnableNSW, NSW Health's statewide disability support service.' At the bottom, there are three columns: 'For Individuals' (describing aids and equipment), 'For Prescribers' (describing clinical advice and guidelines), and 'For Suppliers' (describing business information and requirements).

NSW GOVERNMENT | HealthShare EnableNSW

Ask government | Skip to content | Sitemap

enter keywords here Search

Home | Aids and Equipment Program | Home Respiratory Program | IPTAAS - Travel Assistance | Prosthetic Limb Service | Contact Us

EnableNSW and the National Disability Insurance Scheme

APPLY ONLINE
For aids and equipment or travel assistance

Prescriber Dashboard

Consumer Dashboard

Welcome to EnableNSW, NSW Health's statewide disability support service.

For Individuals

EnableNSW provides aids and equipment such as wheelchairs, ventilators, prosthetic limbs and consumable items for people living with disability or chronic health conditions. We also provide

For Prescribers

We provide clinical advice and guidelines on what can be provided by us for your consumers.

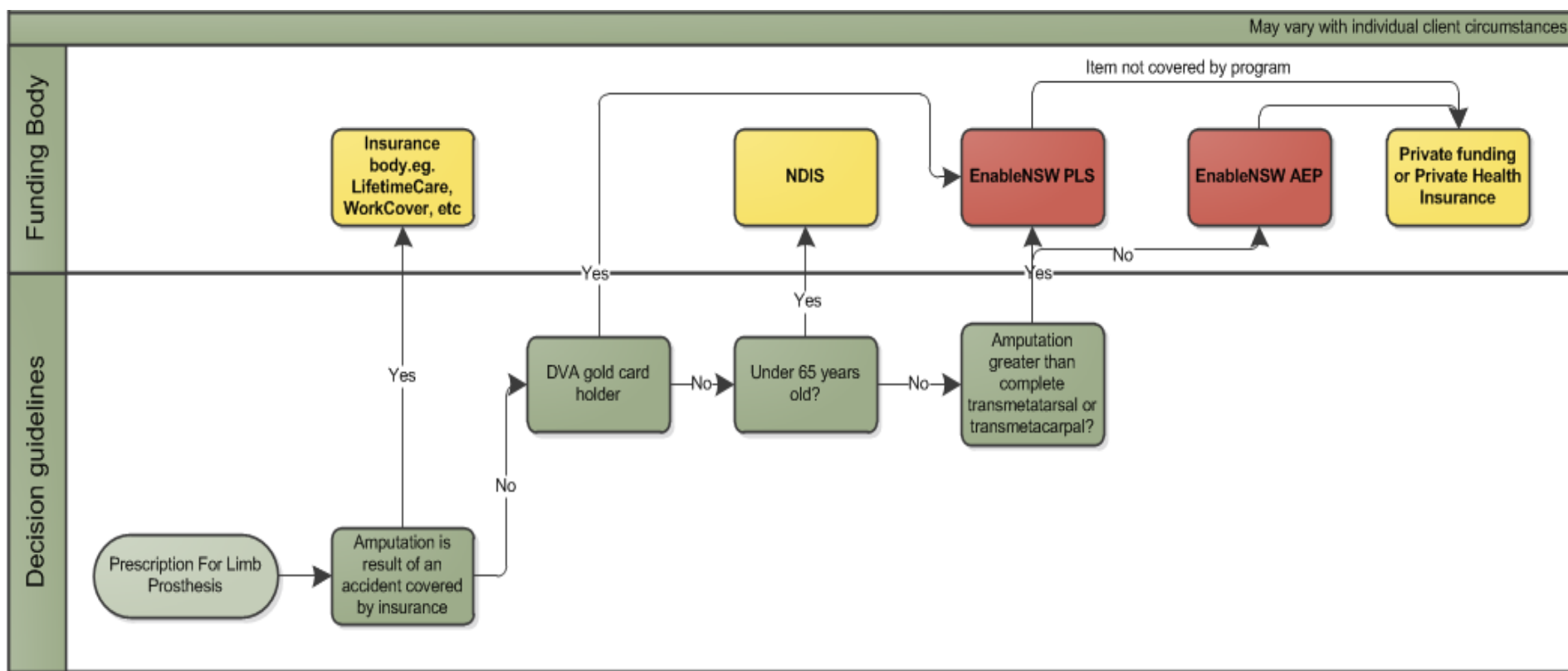
- Professional Criteria for Prescribers
- Categories of Assistive

For Suppliers

We provide information on doing business with us, our processes and requirements, to ensure a mutually beneficial partnership and successful outcomes for our consumers.

NSW GOVERNMENT | HealthShare EnableNSW

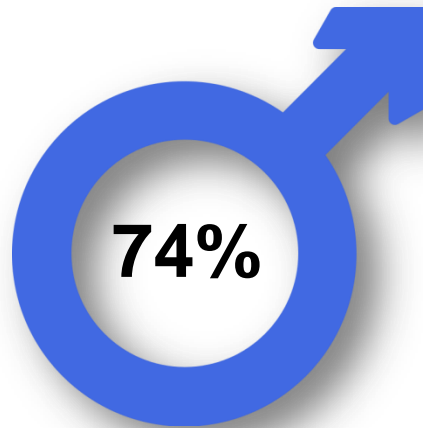
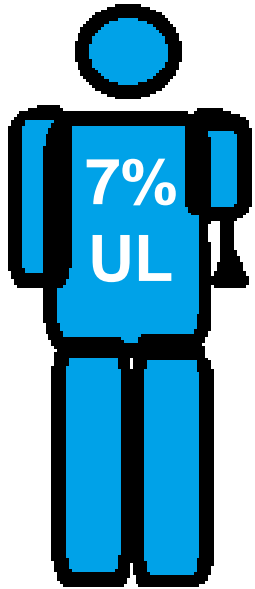
Prosthetic funding pathways



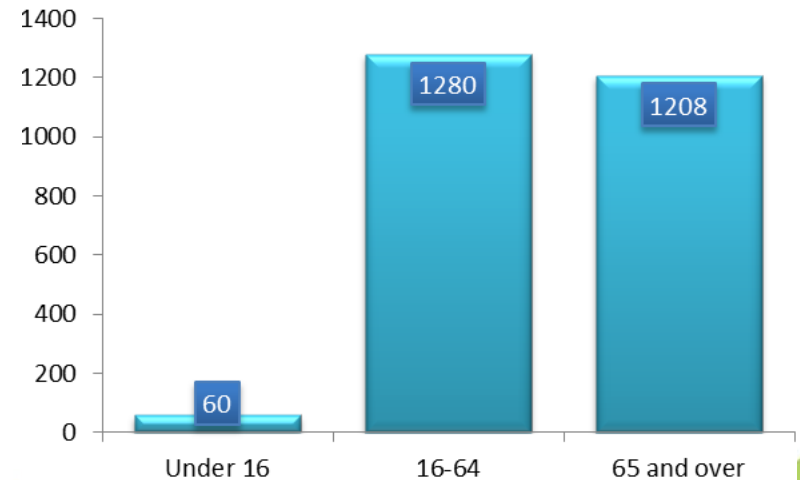
What's new?

- People can now claim **IPTAAS** for travel to see their prosthetist or orthotist
- There are eligibility rules for patients and for prosthetist/orthotists
- See website and factsheet for details

2015/16 PLS statistics

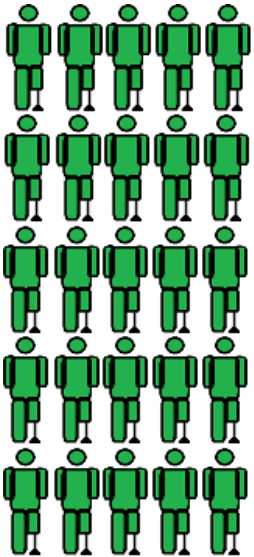


Consumer Age



2015/16 PLS statistics

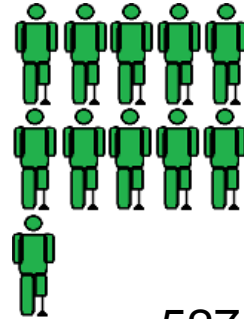
2500 consumers
assisted annually



7036
occasions
of service



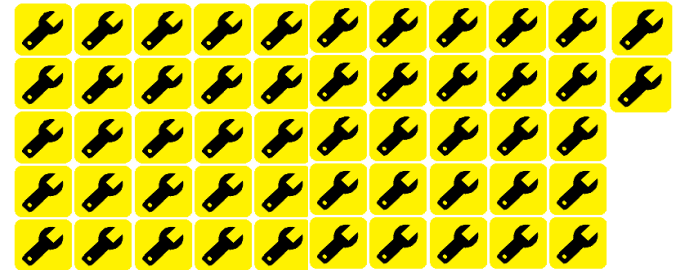
1030 new limbs



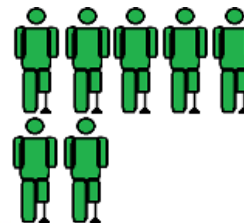
240 interim limbs



5274 minor repairs



710 major repairs



Average cost of prostheses

- Partial Foot \$ 2,215
- Below Knee \$ 4,192
- Above Knee \$ 8,874
- Upper Limb \$ 4,591
- Average cost of a limb overall was \$ 4,985

Contact us:



www.enable.health.nsw.gov.au



enable@health.nsw.gov.au



1800 362 253